

Ancon[®]

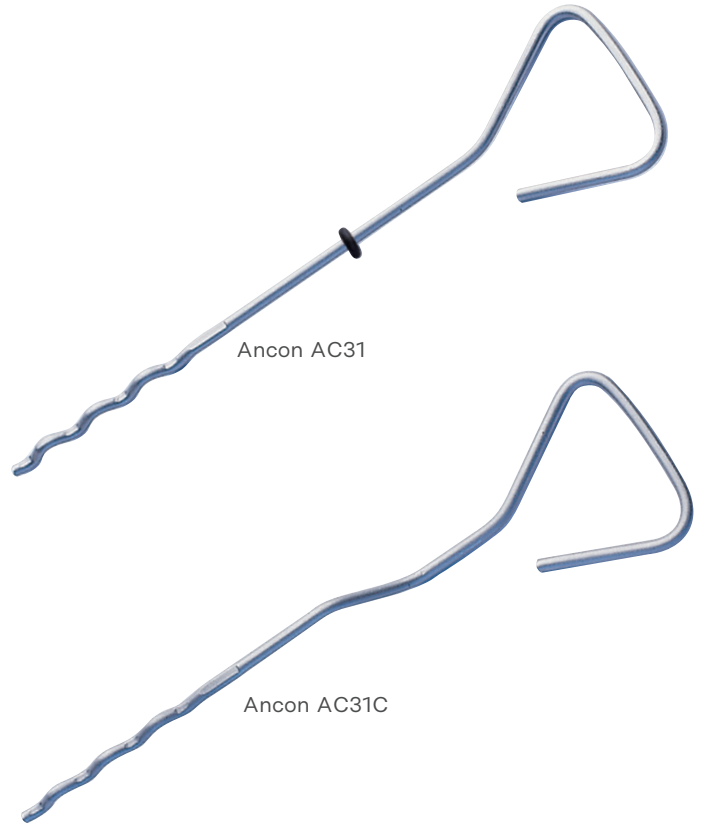
Installation Guide

Ancon AC31 / AC31C

Remedial wall tie for use when rebuilding an outer leaf of a cavity wall.

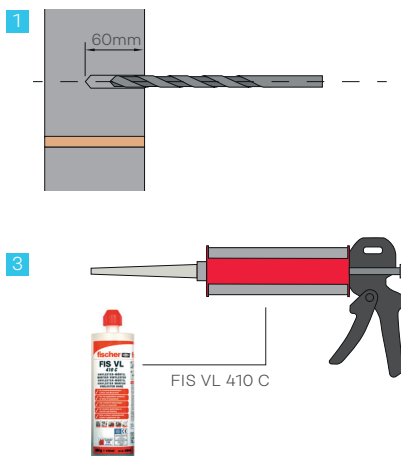
AC31 and AC31C ties are resin-fixed to the inner leaf and built into the outer leaf mortar joint. A Ø10mm hole, 60mm deep is required in the inner leaf and the appropriate tie length should be chosen to ensure a minimum embedment of 62.5mm is achieved in the outer leaf.

Product Ref.	Tie Length (mm)	Cavity (mm)
AC31 175	175	40 – 52.5
AC31C 175		
AC31 200	200	65 – 77.5
AC31C 200		
AC31 225	225	90 – 102.5
AC31C 225		
AC31 250	250	115 – 127.5
AC31 275		
AC31 275	275	140 – 152.5
AC31 300		
AC31 300	300	165 – 177.5



Installation Procedure

- Using a 10mm masonry drill bit, drill a hole into the inner leaf of masonry to a depth of 60mm (if the inner leaf is blockwork, the hammer action should be turned off).
- Ensure the hole is free from debris using either brush or blow bulb.
- Fit a FIS VL 410 C resin cartridge into a resin gun and fix the supplied mixing nozzle. Depress the trigger until the resin passes through the mixing nozzle. Continue until the resin comes out an even grey colour and release the pressure. (do not use resin of an inconsistent colour).



Installation Guide

Ancon AC31 / AC31C

Installation Procedure

- 4 Insert the nozzle to the back of the prepared hole in the inner leaf. Activate the trigger and completely fill the hole in the inner leaf. Release the pressure on the resin gun to avoid wastage.
- 5 Insert the tie into the resin ensuring it is pushed all the way to the back of the hole. AC31C ties should be installed with the drip pointing downwards. Note - the cavity width should be checked at regular intervals to ensure the correct length tie is being used.
- 6 Allow the resin to cure. (refer to table below).
- 7 Build the tie into the outer leaf at the spacing specified by the Project Engineer. Wall ties should be surrounded by fresh mortar and not simply positioned directly onto masonry with mortar placed around them.
- 8 For AC31 ties, ensure the 'O-ring' is positioned in the centre of the open cavity.

Note: Installed wall ties should be clear of mortar droppings to allow the drip to function and prevent water from crossing to the inner leaf of masonry.

A plastic sieve may be used to retain resin and is particularly useful in perforated brick or hollow blockwork. A Ø12mm drill hole is required to fit the sieve.

FIS VL Cure Time

Masonry Temp. (°C)	Min. Cure Time
-5 to 0	24 hr
0 to 5	3 hr
5 to 10	90 mins
10 to 20	60 mins
20 to 30	45 mins
30 to 40	35 mins

